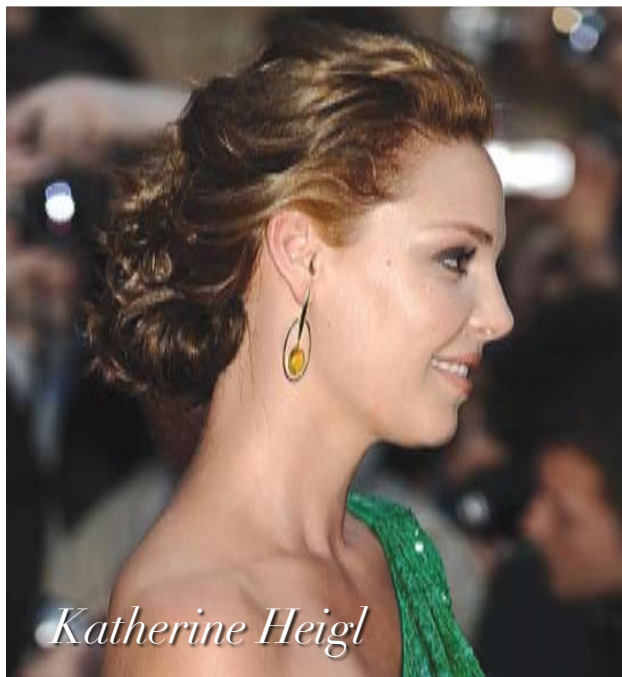


Ever wonder how top color gurus make their A-list clients light up in film and on the red carpet? Well, look no further! Celebrity colorists reveal their megawatt formulations. We've also asked our very own colorazzi — Anthony Smelcer and Gerd Hoher — to create their own versions of these celeb-driven formulas—using different brands, natch!



## Katherine Heigl, Actress

Color by Kim Vö, celebrity colorist, salon owner and product developer

You loved Katherine Heigl's signature blonde locks on *Grey's Anatomy* and in her titillating comedy *The Ugly Truth*, but now colorist Kim Vö, who owns four eponymous salons and a swiftly growing haircare empire, wants you to see this megawatt star in a whole new light...as a sumptuous brunette! "Katherine always wanted to wear darker hair, but due to pressures to look a certain way for her TV and movie roles, it wasn't possible—until now," beams Vö.

Wasn't he nervous? After all, Heigl's new color—sensational or not—would cause a global rumpus just minutes after she departed his salon. "Of course I was nervous; who wouldn't be?" he laughs. "But after reminding myself that hair is hair, no matter who's wearing it, I was fine."

**COLORAZZI: Anthony Smelcer, Pravana Artistic team member, creates his own version of Heigl's new burnished locks!**

**Haircolor:** Pravana Naturceuticals  
**Pretreat:** Silk Degrees Demi-Permanent Shine Treatment plus Shine Serum

### FORMULA:

**Base:** Pravana ChromaSilk, 30 ml 6 (dark blonde), 30 ml 6.3 (golden blonde), 30 ml 6.34 (dark copper golden blonde) + 10-volume developer. (Leave out strategic blonde strands to create a balayage effect.)

### Dimensional Colorations

**Toner/Glaze:** Pravana Silk Degrees Botanical Colors, Honey Toner/Glaze; for a more burnished look, add Copper

**After Care:** Color Ensure Shampoo and Conditioner, Intensive Leave In Hydrating Treatment (home)

[for • mu • la bar]

**Haircolor:** L'Oréal Professionnel, Redken

**Natural Level:** 7

**Existing Haircolor:** Level 9, cool

**Hair Texture:** Medium-fine

**Hair Condition:** Good

### FORMULA

**Base #1:** Richesse (demipermanent), 30 ml 6N (light brown), 30 ml 6.34 (honey chestnut) + 9-volume developer (roots and midshafts)

**Base #2:** Richesse, 30 ml 6.34 (last 2" of ends only) + 9-volume developer

### Dimensional Colorations:

Highlights: L'Oréal Majimeche (cream lightener) + 30-volume developer  
Glaze/Toner: Redken Shades EQ 7 CB (demipermanent) (medium copper brown blonde) + Shades EQ Processing Solution

### PROCEDURE

**Step 1:** Apply Base #1 from roots to 2" away from ends.

**Step 2:** Apply Base #2 to last 2" of ends; process for 30 minutes.

**Step 3:** Shampoo and damp-dry hair. Apply **Glaze/Toner** from roots to ends; process for 20 minutes.

**Step 4:** Shampoo and dry hair completely. Create approximately a 3" square parting on top, starting just behind the fringe area and extending to the crown.

**Step 5:** Beginning at the front of the square parting, take ¼" partings and use the Highlighting formula to create a customized balayage pattern.

**Step 6:** Divide the remainder of the hair into 4 sections and randomly highlight a light amount of strands throughout the hair, keeping in mind how the color will look when worn up, and if more strands are needed on the front/sides to illuminate the complexion. Lift to level 8.

**After Care:** Kim Vö Moisturizing Shampoo and Masque



## Britney Spears, Pop Icon

Color by George Papanikolas of the Andy LeCompte Salon in West Hollywood, California

**We knew that it wouldn't last**—or at least we were hoping it wouldn't: Britney Spears' brunette locks (which were dyed while touring in Europe). Thankfully in early August, Spears turned to star colorist George Papanikolas for a blonde reversion. Papanikolas has been Spears' mane color man for many months, including for the North American leg of her "Circus" tour. (Papanikolas declined to be a part of the European tour due to salon commitments.)

"Britney looks and feels better as a blonde," notes Papanikolas. "She only wore her hair darker for a short time [one application], so it wasn't too difficult to restore her color to its former lightness." After completing the entire process, which took a total of nine hours for Spears to have the old color removed, receive a new blonde color design and a brand-new set of extensions (put in by stylist Jen Atkins), Papanikolas reports that he sent Spears home with an armful of K-PAK haircare products.

**COLORAZZI: Gerd Hoher, master colorist for arteasecolors, blondes up Britney Spears' locks—his way.**

**Haircolor:** arteasecolors

**Prework:** Ecoly Tri-Wheat Reconstructor (to strengthen and even-out porosity)

### FORMULA:

**Base:** arteasecolors powder bleach + 10-volume developer (medium-fine slices; omit a 1/8" parting every fourth to fifth foil to create a lowlighting effect)

### Dimensional Colorations

**Toner/Glaze:** 60 ml 12/88 (Pearl Special Toner) + 10-volume developer (tones and promotes diffusion of lowlights and highlights)

**After Care:** Gentle color-care shampoo and light conditioner as needed.

**Haircolor:** Joico

**Natural Level:** 6

**Existing Haircolor:** 2" regrowth; level 4 ash brown, midshafts and ends

**Hair Texture:** Fine

**Hair Condition:** Fair

**Prework:** Pravana Naturceuticals Color Extractor

### FORMULA

**Base:** Vero K-PAK Color, 45 ml HLA (highlift ash blonde), 15 ml LB (color lightening booster) + 40-volume cream developer

### Dimensional Colorations:

Highlights: VeroLight Plus (powder bleach) + 40-volume cream developer

Lowlights: Vero K-PAK Color, 9G (light golden blonde) + 10-volume developer (extensions)

### PROCEDURE

**Step 1:** Slightly dampen hair and saturate with Pravana Color Extractor. Bag and put under dryer (medium heat) for 20 minutes. Rinse hair and repeat the entire process two additional times. (The Color Extractor reverts Spears' hair from brunette to its previous pale, baby blonde color.)

**Step 2:** Apply Base color to regrowth only and process until hair is light blonde. Shampoo and completely dry hair.

**Step 3:** Using a heavy balayage technique, apply the Highlights formula to the top and crown area. Lighten to pale blonde.

**Step 4:** Color select strands of human hair extensions with Lowlights formula prior to application. Process to warm, baby blonde.

**After Care:** Joico K-PAK Shampoo, Deep-Penetrating Reconstructor and Conditioner

Exclusive! Check out [www.TheColoristMag.com](http://www.TheColoristMag.com) in November for more color tips!